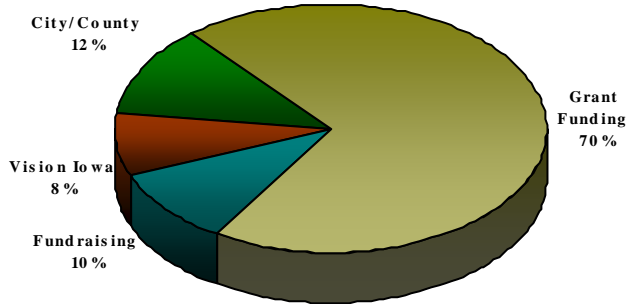


Why Support the Flint River Trail?

Sources of Funding for the Flint River Trail



By supporting the Flint River Trail you will join hundreds of enthusiastic trail advocates who support the Flint River Trail and play an important role in building a network of linked trails in Burlington, Des Moines County and the surrounding area.

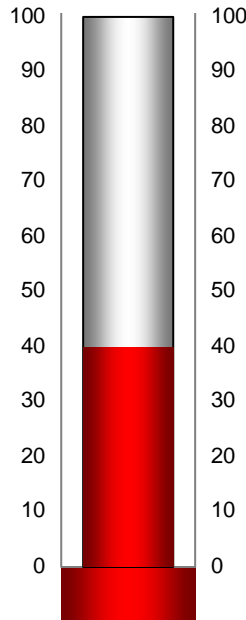
Des Moines County and Burlington have been able to multiply the financial contributions of trail supporters by securing significant grants. This will continue to happen until the target goal is achieved. Overall, the fundraising goal is:

\$645,000

Current Funding Status as of April 2008:
Total
\$6,400,000

With your support the Flint River Trail will provide:

- Safe, quiet places for hiking, bicycling, skating, rollerblading, cross-country skiing and other activities.
- A natural habitat for wildflowers and other prairie plants, as well as wildlife, including deer, wild turkey, songbirds, and waterfowl.
- A unique way of experiencing the landscape without endangering the environment.
- Linear parks compatible with the farms and towns through which they pass.
- A sense of local history.



Trail Rules and Management

Trail Management

The Flint River Trail is managed by the Des Moines County Conservation Office and The City of Burlington Parks Dept. Clubs, organizations and individual volunteers can aid with trail development. If you are interested in helping, please call the Conservation Office at (319) 753-8260 or the Parks Dept (319) 753-8117

Trail Rules

To report non-emergencies, contact the Sheriff's Office at (319) 753-8371 or Burlington Police at (319) 753-8166. To report emergencies, dial 911. Any personal injury requiring the treatment of a physician, which occurs on any property under the jurisdiction of the Des Moines County Conservation Office, shall be reported with all requested information to the Conservation office within twenty-four hours following the occurrence of such injury.

Trail Hours – Sunrise to Sunset.

1. **Leave No Marks.** Do not litter or disturb livestock. Please avoid using the trail if you can leave impressions in the surface.
2. **Stay on open trails only.** Respect trail and road closures, as well as private property adjacent to the trail.
3. **Hunting and trapping are not allowed on the trail.**
4. **No unauthorized motor vehicles** are allowed on any portion of the trail.
5. **Horseback riding is not allowed on the trail.**
6. **Fires are allowed in provided grills only, and liquor and unleashed animals are not allowed on the trail.**
7. **Camping** is not allowed on the trail itself. Designated camping areas nearby are posted.
8. **No user pass is required to use your trail.** Children under the age of 10 should be accompanied by an adult.

Contact Us!

Interested? Want More information?

Contact us!

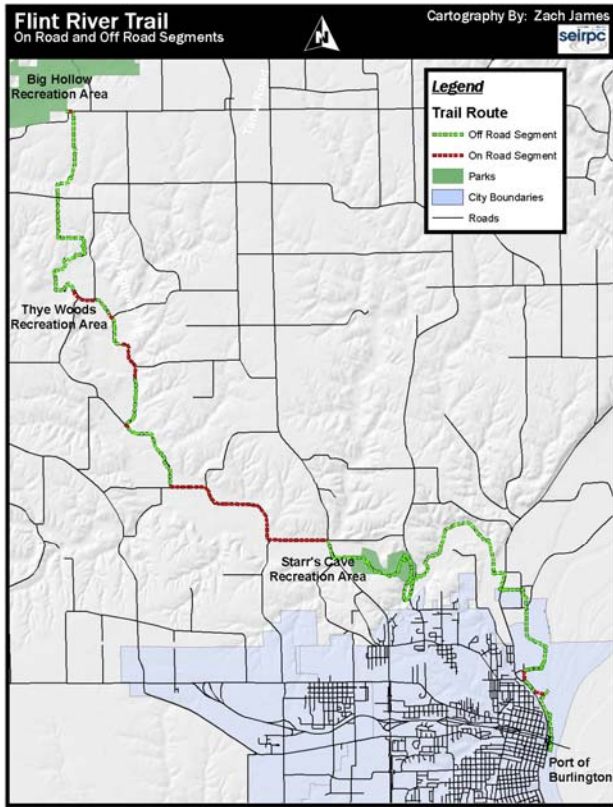
Southeast Iowa Regional Planning Commission
200 N. Front St. # 400
Burlington, IA 52601
319-753-5107 x210
mnorris@seirpc.com



Flint River Trail



Starr's Gave
Park and Preserve



Flint River Trail Facts

- Length – 20 miles
- Surface – Smooth asphalt, crushed limestone, and on-road portions
- Hours – Sunrise to Sunset
- Construction begins Fall 2009!



*“Leave nothing but footprints;
take nothing but pictures.”*

Rich natural resources and natural beauty have attracted people to this region for thousands of years. Indians drawn by the abundant game also collected flint, thus the name Flint River, for arrowheads. The railroad brought the first large wave of European settlers 200 years ago. Our farms, logging, and sawmills fed a flourishing riverboat trade. The local wealth is reflected by the attractive 19th century homes in Burlington.

Soon this heritage will be enjoyed on the Flint River Trail and in nearby museums. Burlington and Des Moines County offers museums, riverboat rides, caves, and friendly and attractive accommodations.

Flint River Recreation Trail

- Deep, rugged woodlands
- Sheer limestone bluffs
- Numerous river outlooks
 - Interpretive sites
 - Gently sloping grade
 - Working farms

Local Events and Accommodations

The Burlington Visitors Bureau – 1-800-82-RIVER or www.VisitBurlingtonIowa.com – has a wealth of information regarding lodging, camping, food, museums, entertainment, and shopping.

Safety and Enjoyment

There is risk in any outdoor activity, and you are responsible for your own safety and that of your family members. When biking, hiking, skating, participating in winter sports, or otherwise using the trails or any of our streets, roads and highways, please remember to be careful and alert at all times. Be especially safety conscious when you become fatigued, when light is poor, or when weather conditions change.

Now on the web
www.FlintRiverTrail.org

The Flint River Trail is a large project. To make it a reality, we need your help. Whether you can give 5 dollars, 500 dollars or 5,000 dollars, your help is greatly appreciated and a necessary component to make this trail become a reality. The target goal for fundraising is \$645,000 and there are several levels of donation:

- \$500-999–Supporter
- \$1,000-4,999–Enthusiast
- \$5,000-9,999–Scout
- \$10,000-14,999–Trailblazer
- \$15,000-24,999–Pioneer
- \$25,000-49,999–Ranger
- \$50,000-74,999–Partner
- \$75,000-99,999–Benefactor
- \$100,000 and up–Founder



Your donation goes to Partners for Conservation, a non-profit foundation of Des Moines County Conservation. Please consult a tax professional for more information on how this will affect your taxes. Send donations to:

Partners for Conservation
P.O. Box 714
Burlington, IA 52601

R e c o g n i t i o n

In addition to these levels, you can also be recognized for your donation on trail amenities at certain levels of donation as follows:

- \$5,000–Bench
- \$10,000–Trail Sign or Gazebo
- \$25,000–Trail Mile
- \$50,000–Trail Bridge
- \$100,000–Trail Section

