



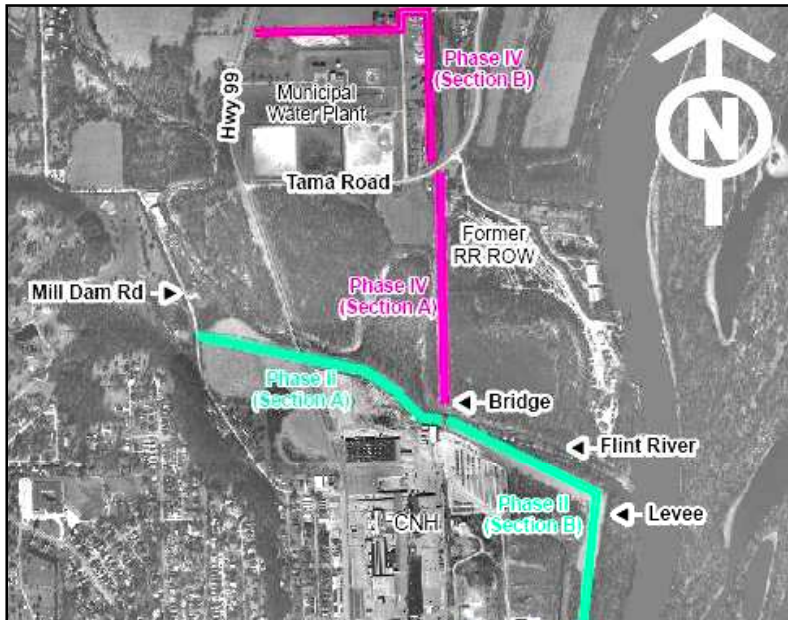
### **Flint River Trail Progress - Bridge Construction**

April 9, 2009

Primary work on the former rail bridge spanning the Flint River has been completed. This bridge will connect the trail from south of Tama Road to the future trail upon the levee, north of Case Company.

**M & H Construction** has completed the bridge work as shown in the photos.





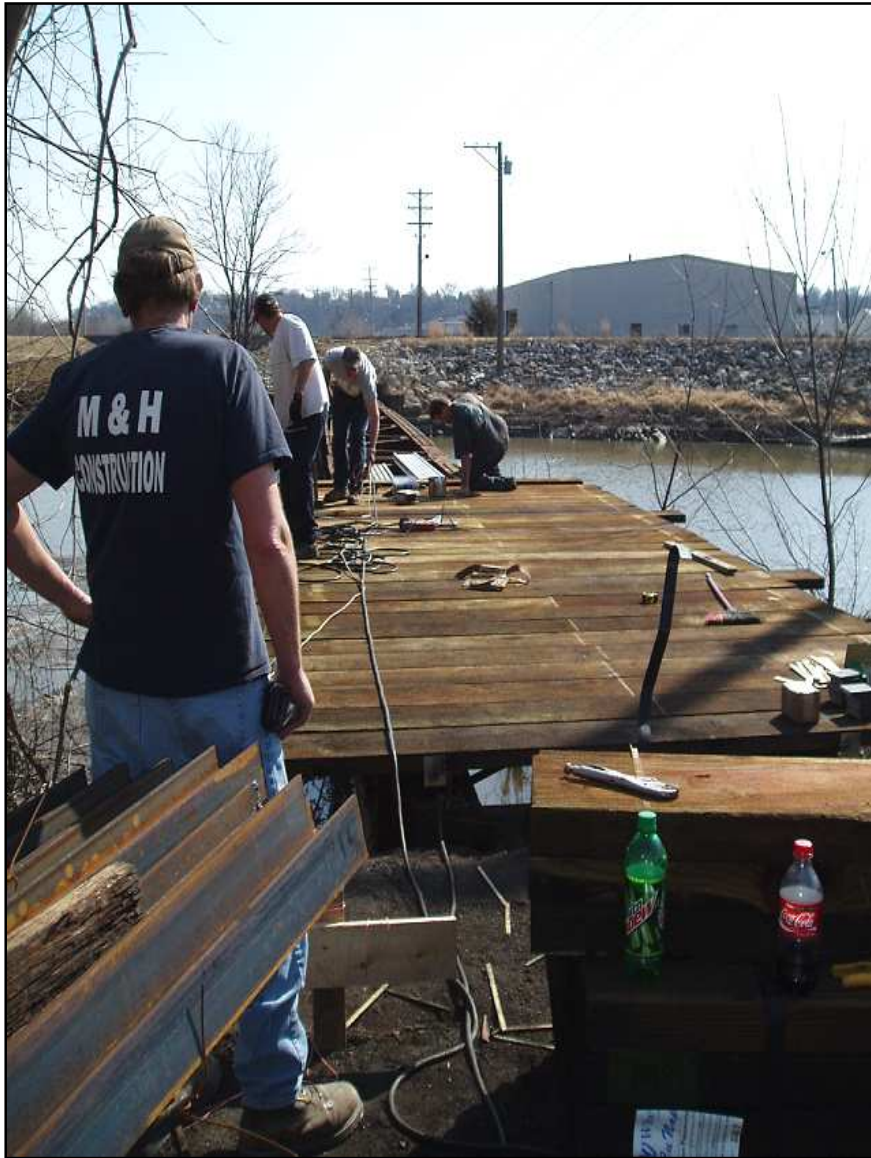
## Flint River Trail Progress - Bridge Construction

March 26, 2009

The former rail bridge spanning the Flint River is in the process of being reconstructed with new decking to provide a safe route across the Flint River. The above photos show the bridge as it is being constructed. This bridge will connect the trail from south of Tama Road to the future trail upon the levee, north of Case Company.

See below for additional photos of the bridge.

**M & H Construction** is completing the bridge work as shown in the photos.



### **Flint River Trail progress**

March 13, 2009

The former rail bridge spanning the Flint River is under construction. The bridge is in the process of being reconstructed with new decking to provide a safe route across the Flint River. This bridge will connect the trail from the levee surrounding the Case Company to the trail under construction south of Tama Road.

**M & H Construction** is completing the bridge work as shown in the photos. The Flint River can also be seen below the bridge in the photos above.